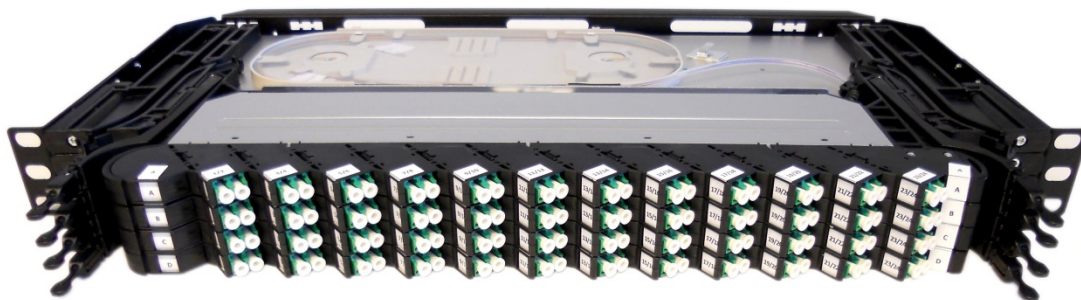


DATASHEET

Front Loaded ODF Panel 19" 1HE Right

FLODF G657A1 96F-LCHD/APC 4x Cass.R. Grade B Shutter - 01-96 ANT



Part no. 8128-PPTL-DEFENSIE-0064-ANT
Description FLODF G657A1 96F-LCHD/APC 4x Cass.R. Grade B Shutter - 01-96 ANT
Version Revision B / 03-03-2017

Compose Network
Connections bv

Kometenplein 35
5215 MB 's-Hertogenbosch
Postbus 156
5270 AD St. Michielsgestel

T +31 73 553 13 70
F +31 73 551 70 03

Rabobank
St. Michielsgestel
Ibannummer
NL42RAB00133671410

KvK 's-Hertogenbosch
16065257

BTW
NL8073.80.544.B.01

E info@compose.nl
I www.compose.nl



Front Loaded ODF Panel 19" 1HE Right FLODF G657A1 96F-LCHD/APC 4xCass.R.GradeB Shutter -01-96 ANT

INTRODUCTION

This front loaded splice / patch concept of Compose Network Connection is especially designed for the quick and simple splicing of large amounts of fibres. Besides the superior quality of the concept, Compose introduces a new aspect: The Design!

The concept is equipped for the splicing of 96 fibres on 1U and all types of fibres, including Air Blown Fibre.

During the design we focussed on the simplicity of the installation and in order to facilitate the creation of a fast and error free fibre patch. The experience of our customers we took in to account while designing this drawer. And the result is stunning!

The cassettes are delivered including adapters, pigtails, splice trays and mounting materials. Unique is the pre-assembly of the drawer. This means that all the components are mounted in the drawer (Pre-loaded). On location you just have to insert the cable and can start immediately with the splicing.

The ease of the installation, easy creating of the fibre patches, the outstanding quality and last but not least the stunning design: that's what the drawer of Compose Network Connections stands for!

BENEFITS

- The positioning of the 19" mounting handles is adjustable. Minimum position is 55 mm from the front of the drawer.
- The drawer is completely equipped. Everything is positioned and mounted in the drawer. The pigtails are stripped and inserted in the trays.
- The drawer is prepared for the termination of 96 fibres cable.
- The drawer is prepared to handle 4 separate cassettes of 24 fibres.
- Each cassette can be slide independently 40 mm to the front in order to facilitate the creation of a fiber patch.
- The splice tray's are equipped with splice holders for ANT splice protectors.
- The drawer is prepared for the termination of fibre tubes with 12 or 24 fibres.

Document

**Front Loaded ODF Panel 19" 1HE Right
FLODF G657A1 96F-LCHD/APC 4xCass.R.GradeB Shutter -01-96 ANT**

FEATURES

- 19" housing, steel, 1U
- Powder coating, Black
- Width x depth 436 mm x 190 mm
- 4x sliding cassettes
- Angled positioning adapters
- Mounting materials, cage nuts
- Cable management pigtails
- Identification Cassette A till D White with Black overprint.
- 4 x splice tray for 24 splices
- Splice holders ANT splice protectors
- G.657A1 singlemode fibre
- 48 x LC/APC duplex adapters
- 96 x LC/APC 8° grade B pigtails conform IEC 61753, 61754 and 61755
- Color coding pigtails conform:



OPTICAL PERFORMANCE PIGTAILS LC/APC 8°

Colour	Green	
Insertion Loss	Grade B	< 0.12 dB typical
	97 %	<0.25 dB random
	100 %	<0.30 dB random
Return Loss	Grade 1	> 65 dB typical

OPTICAL PERFORMANCE ADAPTERS

Colour	Green
Type	LC/APC Duplex , conform IEC 60874
Sleeve	Zirconia
Laser protection	Internal shutter protection

**Front Loaded ODF Panel 19" 1HE Right
FLODF G657A1 96F-LCHD/APC 4xCass.R.GradeB Shutter -01-96 ANT**

Environmental test B: Dry Heat IEC 60068-2-2

Parameter (setup climatic chamber)	Value
T min	- 25 degree Celsius
T max	+ 70 degree Celsius
T measurement	23 +/- 3 degree Celsius
Humidity	--
Rising Time	1K/min
Hold time (Tmeas)	1 h

ORDER INFORMATION

Subscription	Part no.
Front Loaded ODF Panel 19" 1HE Right	8128-PPTL-DEFENSIE-0064-ANT
FLODF G657A1 96F-LCHD/APC 4xCass.R.GradeB Shutter -01-96 ANT	

MORE INFORMATION

If you have any further questions, do not hesitate to contact us!

COMPOSE NETWORK CONNECTIONS BV

Kometenplein 35
5215 MB 's - Hertogenbosch

T: +31 (0)73 – 553 13 70

F: +31 (0)73 – 551 70 03

www.compose.nl

Sales@compose.nl