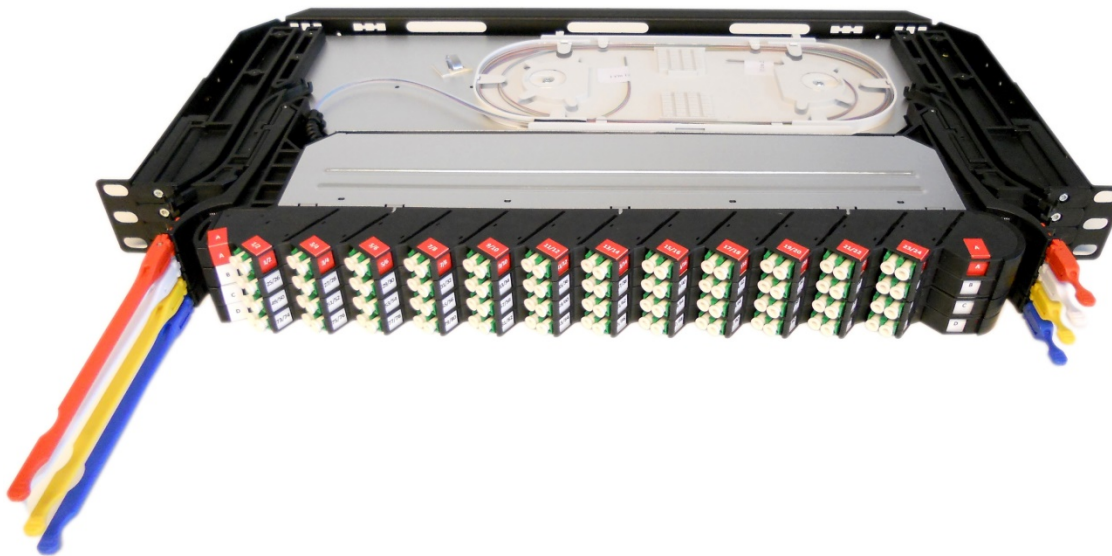


# DATASHEET

**Front Loaded ODF Panel 19" 1HE Left  
FLODF G657A1, 96F-LCHD/APC, 4x Cass. L-01-96**



Part no. 8128-PPTL-PPT-1L-96-00B-E  
Description FLODF G657A1 96F-LC/APC 4xCass.L - 01-96  
Version Revision A / 03-03-2017

Compose Network  
Connections bv

Kometenplein 35  
5215 MB 's-Hertogenbosch  
Postbus 156  
5270 AD St. Michielsgestel

T +31 73 553 13 70  
F +31 73 551 70 03

Rabobank  
St. Michielsgestel  
Ibannummer  
NL42RAB00133671410

KvK 's-Hertogenbosch  
16065257

BTW  
NL8073.80.544.B.01

E [info@compose.nl](mailto:info@compose.nl)  
I [www.compose.nl](http://www.compose.nl)



## Front Loaded ODF Panel 19" 1HE Left FLODF G657A1, 96F-LCHD/APC, 4x Cass. L-01-96

### INTRODUCTION

---

This front loaded splice / patch concept of Compose Network Connection is especially designed for the quick and simple splicing of large amounts of fibres. Besides the superior quality of the concept, Compose introduces a new aspect: The Design!

The concept is equipped for the splicing of 96 fibres on 1U and all types of fibres, including Air Blown Fibre.

During the design we focussed on the simplicity of the installation and in order to facilitate the creation of a fast and error free fibre patch. The experience of our customers we took in to account while designing this drawer. And the result is stunning!

The cassettes are delivered including adapters, pigtails, splice trays and mounting materials. Unique is the pre-assembly of the drawer. This means that all the components are mounted in the drawer (Pre-loaded). On location you just have to insert the cable and can start immediately with the splicing.

The ease of the installation, easy creating of the fibre patches, the outstanding quality and last but not least the stunning design: that's what the drawer of Compose Network Connections stands for!

### BENEFITS

---

- The positioning of the 19" mounting handles is adjustable. Minimum position is 55 mm from the front of the drawer.
- The drawer is completely equipped. Everything is positioned and mounted in the drawer. The pigtails are stripped and inserted in the trays.
- The drawer is prepared for the termination of 96 fibres cable.
- The drawer is prepared to handle 4 separate cassettes of 24 fibres.
- Each cassette can be slide independently 40 mm to the front in order to facilitate the creation of a fiber patch.
- The splice tray's are equipped with splice holders for ANT splice protectors.
- The drawer is prepared for the termination of fibre tubes with 12 or 24 fibres.

**Front Loaded ODF Panel 19" 1HE Left  
FLODF G657A1, 96F-LCHD/APC, 4x Cass. L-01-96**

**FEATURES**

---

- 19" housing, steel, 1U
- Powder coating, Black
- Width x depth 436 mm x 190 mm
- 4x sliding cassettes
- Angled positioning adapters
- Mounting materials, cage nuts
- Coding plate and patch cable support
- Identification cassette A red with white overprint and cassette B till D white with black overprint.
- 4 x splice tray for 24 splices
- Splice holders ANT splice protectors
- G.657A1 singlemode fibre
- 48 x LC/APC duplex adapters
- 96 x LC/APC 8° pigtails conform IEC 61753, 61754 and 61755
- Color coding pigtails conform:



**OPTICAL PERFORMANCE PIGTAILS LC/APC 8°**

---

|                |         |                              |
|----------------|---------|------------------------------|
| Colour         | Green   |                              |
| Insertion Loss | Grade C | < 0.25 dB typical            |
|                | 97 %    | <0.50 dB random              |
|                | 100 %   | <0.70 dB random              |
|                | 100 %   | <0.30 dB reference connector |
| Return Loss    | Grade 1 | > 60 dB minimum              |
|                |         | > 65 dB typical              |

**OPTICAL PERFORMANCE ADAPTERS**

---

|        |                                   |
|--------|-----------------------------------|
| Colour | Green                             |
| Type   | LC/APC Duplex , conform IEC 60874 |
| Sleeve | Zirconia                          |

**Front Loaded ODF Panel 19" 1HE Left  
FLODF G657A1, 96F-LCHD/APC, 4x Cass. L-01-96**

**Environmental test B: Dry Heat IEC 60068-2-2**

---

| <b>Parameter (setup climatic chamber)</b> | <b>Value</b>            |
|---|-------------------------|
| T min                                     | - 25 degree Celsius     |
| T max                                     | + 70 degree Celsius     |
| T measurement                             | 23 +/- 3 degree Celsius |
| Humidity                                  | --                      |
| Rising Time                               | 1K/min                  |
| Hold time (Tmeas)                         | 1 h                     |

**ORDER INFORMATION**

---

| <b>Subscription</b>   | <b>Part no.</b>            |
|---|----------------------------|
| Front Loaded ODF Panel 19" 1HE Left<br>FLODF G567A1, 96F-LCHD/APC, 4x Cass. L-01-96 | 8128-PPTL-PPT-1L-96-00B-E* |

*\* All ODF panels with part number ending on E (version E) are provided with a black label with white colored text at the cable entry side.*

**MORE INFORMATION**

If you have any further questions, do not hesitate to contact us!

**COMPOSE NETWORK CONNECTIONS BV**

Kometenplein 35  
5215 MB 's - Hertogenbosch

T: +31 (0)73 – 553 13 70

F: +31 (0)73 – 551 70 03

[www.compose.nl](http://www.compose.nl)

[sales@compose.nl](mailto:sales@compose.nl)